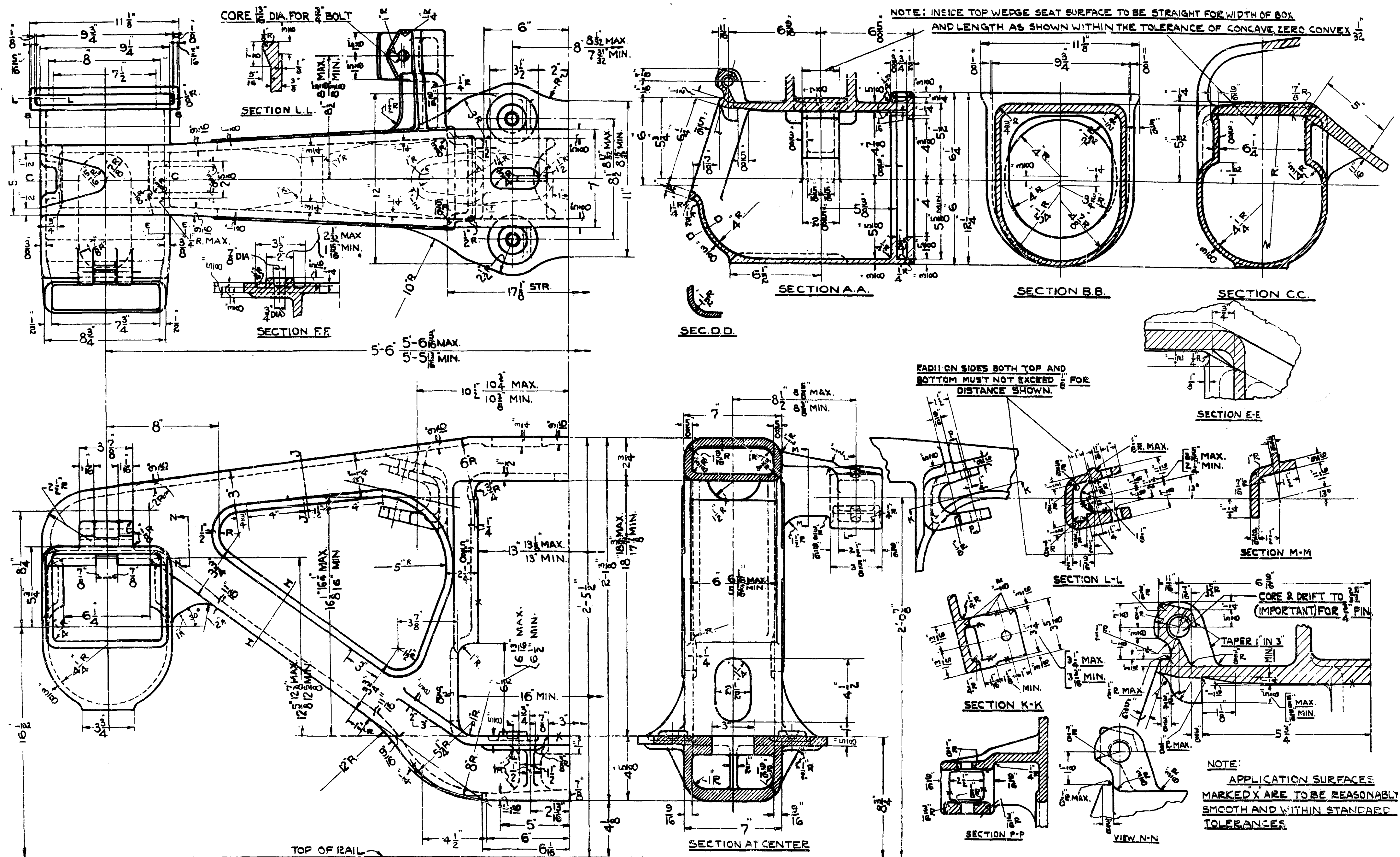


ORIGINAL NUMBERS	CLASS.	LINE.
	50 Ton Truck	1.



PATENTED

SCULLIN STEEL CO. RESERVES THE RIGHT TO MODIFY DETAILS NOT AFFECTING APPLICATION IF NECESSARY TO FACILITATE MANUFACTURE. MARKING TO SHOW NAME OF MANUFACTURER, DATE CAST, MONTH & YEAR, SERIAL NO., R.R. INITIALS, R.R. PATT. NO., AARJ & SIZE OF JOBS, 5" x 10"; MARKING TO BE IN ACCORDANCE WITH OUR PRINT I-5261-B. ANY DRILLING, MACHINE WORK OR SEPARATE PARTS MUST BE COVERED BY CONTRACT WITH SCULLIN SALES DEPT.

SCULLIN STEEL CO. DRWG. NO. I-5221-H
 " " " " PATT. NO. 5321-H
 SOUTHERN RY. PATT. NO. CS.-444

TRUCK SIDE FRAME.
 SOUTHERN RAILWAY SYSTEM,
 WASHINGTON, D.C. NOV. 26th, 1943.

NOTE:-
 INTERCHANGES WITH FRAME SHOWN
 ON DRAWING SF-3578.

CORRECT:

REV.				

MECH. ENG. **SF-2437**